

Replacement of the diodes in the Diode lamp

These instructions are for replacing the diodes in the diode lamps from the sets:

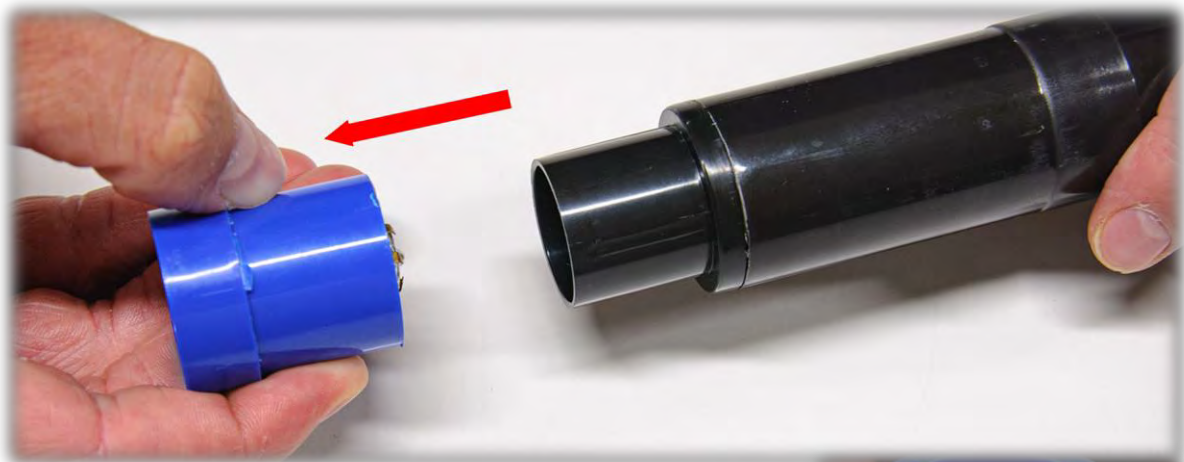
- P5115-1A Diode lamps for additive colour mixing
- DL215-1A Additive mixture of colour, "compact"



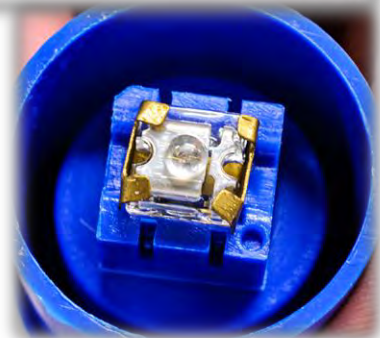
The replacement is easily made. The only tool you will need are forceps. For example:

- C7418-1A Forceps, pointed ends, stainless steel L115 mm
- C7418-1B Forceps plastics, L120 mm

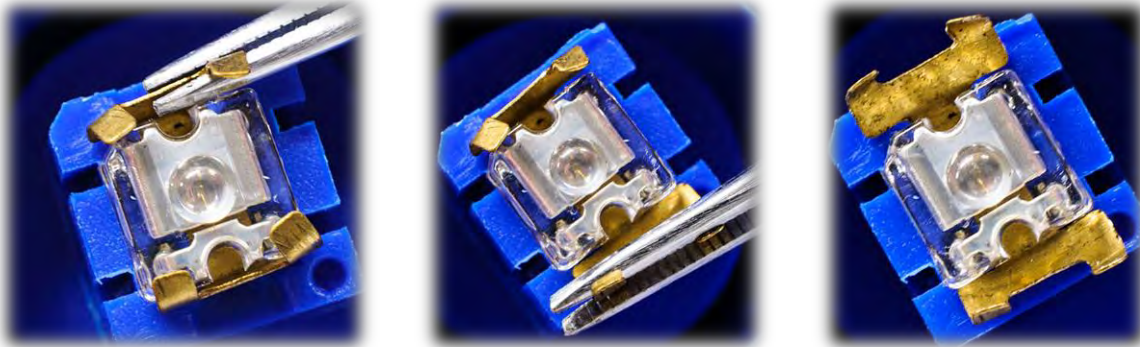
Pull the coloured light part off the tube:



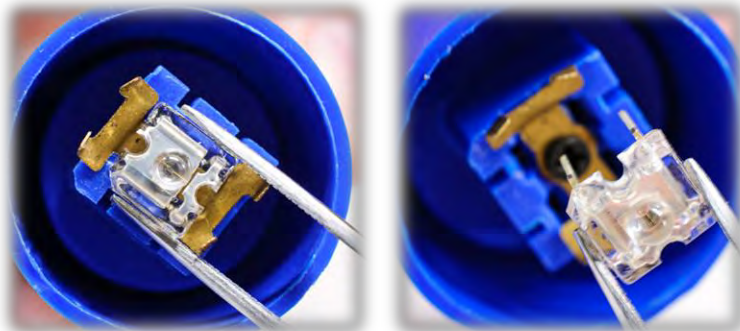
In the coloured light part, you can see the diode, which is held in place by two metal brackets – see picture on the right.



With the help of the forceps, carefully bend the two brackets away from the diodes.



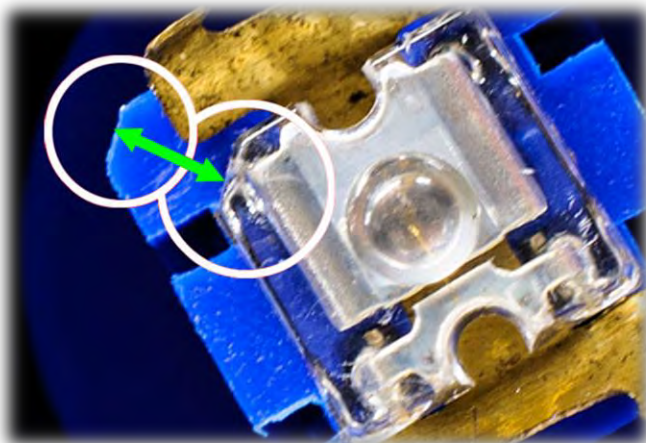
Carefully, lift the diode out of the socket using the forceps – as shown in the image below:



When replacing the diode, use the colour corresponding to the housing.

Order assistance:

P5115-1ABD Diode blue (raw), for Diode lamp
P5115-1AGD Diode green (raw), for Diode lamp
P5115-1ARD Diode red (raw), for Diode lamp



To insert the new diode, proceed in reverse order.

Please note the alignment - the bevelled edge of the diode is mirrored in the socket.